

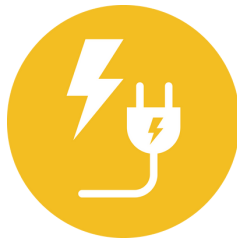


# Wootton Group

Heating • Plumbing • Electrical • Renewables



## Shield Cover Plans



## About Wootton Group

At Wootton Group, we take pride in being a trusted partner of many domestic and business customers. We are based in Newport with over 20 years of experience in the heating industry. Over the years, we have built our reputation on delivering reliable, professional, and friendly service to households and businesses alike.

We provide a comprehensive range of heating services, including the installation, servicing, and repair of all gas appliances, central heating systems, and boilers. Our team also carry out landlord gas safety inspections and certification, professional powerflushing to improve system efficiency, and tailored maintenance service contracts to give our customers complete peace of mind.

All of our engineers are Gas Safe registered, ensuring every job is completed with the highest levels of safety and professionalism. We are also proud to be OFTEC registered, the UK's leading registration scheme for oil fired and renewable heating appliances, meaning we are fully qualified to work on both traditional and renewable heating systems.

At Wootton Group, our focus is on combining technical expertise with the personal care and attention. Whether you require a one-off repair, regular servicing, or a brand-new installation, we are committed to delivering a professional service you can trust – keeping your home safe, comfortable, and energy-efficient.

We deeply value our customers and are committed to providing exceptional support. Your satisfaction is our top priority, and we're here to assist you with any needs or concerns



## Shield Cover Plans

Wootton Group Shield Cover Plans protect your home every hour of the day and night. Heating and hot water failures do not follow office hours. Cover gives fast access to support when problems arise.

Shield Cover Plans reduce stress during breakdowns. Repairs, callouts, and advice sit under one clear plan. Costs stay predictable. Disruption stays limited. Homes stay warm and safe.

Value sits at the heart of each plan. Regular servicing lowers failure risk. Early fault detection cuts repair time. Priority response reduces downtime during colder periods.

Commitment to customers drives every cover level. Support comes from trained in-house engineers. Work meets recognised safety standards. Advice stays clear and honest.

Shield Cover Plans suit busy households and landlords who value reliability.

- 24/7 access to engineer support
- Priority response during emergencies
- Planned servicing to reduce breakdown risk
- Clear pricing with no surprises

Shield Cover Plans deliver reassurance through dependable service and long-term care.

# Wootton Group

Heating • Plumbing • Electrical • Renewables

# Gas Shield Plans



## **Plan 100 – Service Only Gas Boiler**

**£8.99 per Month**

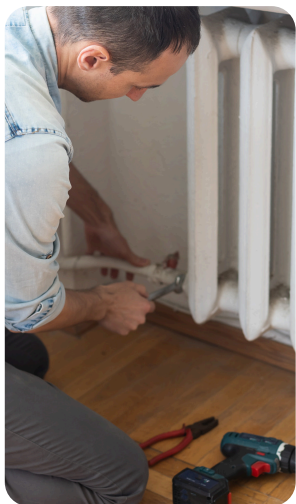
Remove the worry of tracking service dates. The team contacts you before the service anniversary and arranges a suitable visit. Regular servicing keeps manufacturer warranties valid. Safety checks protect your home and household.



## **Plan 101 – Service & Repair Gas Boiler**

**£15.99 per Month**

Your gas boiler will be fully covered for repairs, including parts, labour, and call-out charges. Plus, as long as your plan remains active, we'll provide an annual boiler service.



## **Plan 102- Service & Repair Gas Boiler & Heating System**

**£19.99 per Month**

Your heating system and gas boiler are covered for repairs, including parts, labour, and call-out charges. Each year your plan is active, we'll also service your boiler.

Coverage includes:

- Gas boiler
- Radiators and valves
- Heating controls
- Pumps and valves
- Accessible system pipework
- F&E tank and ball valve
- Annual boiler service



# Gas Shield Plans



## **Plan 103 – Service & Repair Gas Boiler, Heating System & Plumbing £22.50 per Month**

Protect your heating system, gas boiler, and plumbing are covered for repairs, including parts, labour, and call-out charges. Each year your plan is active, we'll also service your boiler. Coverage includes:

- Gas boiler
- Radiators and valves
- Heating controls
- Pumps and valves
- Accessible system pipework
- F&E tank and ball valve
- Annual boiler service

### **Parts of the Plumbing system that are covered are as follows:**

- Accessible hot & cold pipework
  - Standard vented cylinder
- Cold water tank & ball valve
  - Washers
- Exposed showers (labour only)
  - Taps (labour only)





# Gas Shield Plans



## **Plan 200 – Service & Repair Under Warranty Appliance – Heating System** **£19.99 per Month**

Protect your heating system with our Plan 200. Ideal for under warranty boilers. We cover your heating system plus service you gas appliance to maintain its manufacturers warranty.

- Radiators and valves
- Heating controls
- Pumps and valves
- Accessible system pipework
- F&E tank and ball valve
- Annual boiler service



## **Plan 201 – Service & Repair Under Warranty Appliance – Heating System & Plumbing** **£18.50 per Month**

Protect your heating system with our Option 201 plan plus Plumbing Cover. Perfect for boilers still under warranty, this plan includes repairs, parts, labour, and regular servicing to help maintain your warranty.

Coverage includes:

- Radiators and valves
- Heating controls
- Pumps and valves
- Accessible system pipework
- Annual boiler service
- F&E tank and ball valve

**Plus,** Parts of the Plumbing system.



# Gas Shield Plans



## **Plan 202 – Service & Repair Unvented Cylinder Coverage & Plumbing** **£19.99 per Month**

Your unvented cylinder and plumbing are covered for repairs, including parts, labour, and call-out charges. Each year your agreement is active, we'll also service the cylinder to keep your warranty up to date. Coverage includes:

- Cylinder controls
- Immersion heaters
- Pressure relief valves
- Anodes
- Expansion vessel
- Annual cylinder service

### **Parts of the Plumbing system that are covered are as follows:**

- Accessible hot & cold pipework
  - Standard vented cylinder
- Cold water tank & ball valve
  - Washers
- Exposed showers (labour only)
  - Taps (labour only)



# Gas Shield Plans Comparison

	100	101	102	103	200	201
<b>Gas Appliance (Boiler)</b>	✓	✓	✓	✓	✓	✓
Service	✓	✓	✓	✓	✓	✓
Repair		✓	✓	✓		
<b>Heating System</b>			✓	✓	✓	✓
Repair			✓	✓	✓	✓
<b>Plumbing</b>				✓		✓
Repair				✓		✓
<b>Ideal for Under Warranty Appliance</b>					✓	✓

## Parts of the Heating system that are covered:

- Radiators and valves
  - Heating controls
  - Pumps and valves
- Accessible system pipework
  - Annual boiler service
  - F&E tank and ball valve

## Parts of the Plumbing system that are covered are as follows:

- Accessible hot & cold pipework
  - Standard vented cylinder
  - Cold water tank & ball valve
    - Washers
- Exposed showers (labour only)
  - Taps (labour only)